

The Stanislaus Farm News

The *voice* of Stanislaus County Agriculture

STANISLAUS COUNTY



For the good of your food.



Official Publication of Stanislaus
County Farm Bureau
Vol.74 No.2 January 20, 2023

Nursery Special Pages: 14, 19 & 27

Photo provided by Dave Wilson Nursery, 'Remembering Floyd Zaiger'

Stanislaus Farm News

Published Fridays by the
Stanislaus County Farm Bureau

PHONE (209) 522-7278

FAX (209) 521-9938

email: farmnews@stanfarmbureau.org

advertising@stanfarmbureau.org

Stanislaus Farm News (ISSN: 8750-4960)
Copyright © 2023 is published 24 times per year
by the Stanislaus County Farm Bureau 1201 L
St. Modesto, CA 95454. Call (209) 522-7278
to subscribe. Application to mail at Periodicals
postage prices is pending at Modesto, CA.

The Stanislaus Farm News will publish on
the following dates in 2023: Jan 20 Feb 3, 17
March 3, 17 April 7, 21 May 5, 19 June 9, 23
July 7, 21 Aug 4, 18 Sept 8, 22 Oct 6, 20 Nov
3, 17 Dec 1, 15

POSTMASTER: Send address changes to:
1201 L Street Modesto, CA 95354.

Stanislaus County Farm Bureau does not assume
responsibility for statements by advertisers
or for products advertised in the Stanislaus
Farm News. Farm Bureau does not assume
responsibility for statements or expressions
of opinion other than in editorials or in articles
showing authorship by an officer of the Stanislaus
County Farm Bureau.

Staff

CAITIE DIEMEL

Executive Manager

MARY CLEMENTS-HARRIS

Administrative Assistant

ANNA GENASCI

Communication & Education Director

ABIGAIL DIRKSE

Membership Director

LARRY MURRAY

Advertising Sales

TOM ORVIS

Governmental Affairs Director

MELISSA SOMMERVILLE

Bookkeeper

BOARD OF DIRECTORS

Pres: Eric Heinrich.....605-3663

1st VP: Kelly Fogarty202-870-3342

2nd VP: Vance Ahlem535-4521

Sec: Vince Dykzeul480-5900

Treas: Corinne Santos265-6075

Past President: Jacob Wenger484-9343

NORTHWEST:

Joey Gonsalves765-1142

Stuart Layman.....652-7822

Dave Van Klaveren595-4606

Keri Layne402-7289

Tom Ulm402-9870

Paul Vermeulen988-3661

NORTHEAST:

Rod Gambini996-6294

Jacob DeBoer805-704-5304

Ryan Valk840-0231

Pete Dykzeul872-7080

Kurt Hoekstra765-2932

Ray Lial Jr.....327-3232

EASTSIDE:

Jeff Daniels602-0628

Michael Frantz605-7724

Alex VanderStoel775-217-1942

David Absher.....531-4915

OPEN:

Randy Weststeyn499-9775

SOUTHERN:

Adam Crowell.....610-6306

Tim Sanders606-3739

Ray Souza678-1871

Trevor Cordova402-3203

Arby Hoobayr505-0555

Darrell Cordova765-6298

WESTSIDE:

Daniel Bays681-6510

Matt Maring602-1390

Jessica Filippini648-8236

Bill Cox404-8897

Rob Brooks765-2628

Jerry Goubert531-3790

YF&R:

Mark Avilla985-0620

AT LARGE:

Ron Peterson.....606-8021

CFBF DISTRICT 13 REP.:

Ron Peterson.....606-8021

STANISLAUS COUNTY FARM BUREAU'S

Eastside Regional Meeting

JOIN US THURS. FEBRUARY 16TH, 2023
AT THE FRUIT YARD STARTING AT 6:00 PM

JOIN US FOR A GREAT DINNER, GUEST SPEAKER AND WATER UPDATE
FROM TID & TO ELECT YOUR EASTSIDE BOARD MEMBERS

STANISLAUS COUNTY FARM BUREAU'S

Southern Regional Meeting

JOIN US THURS. FEBRUARY 23RD, 2023
AT THE VIERRA DAIRY CONFERENCE ROOM AT 7AM

JOIN US FOR A GREAT BREAKFAST, GUEST SPEAKER AND TO ELECT
YOUR SOUTHERN BOARD MEMBERS

SCFB MISSION STATEMENT

To serve as the voice of Stanislaus County agriculture at all levels of
government, while providing programs to assist its farms and family
members and educate the general public of needs and
importance to agriculture.



STANISLAUS COUNTY FARM BUREAU'S

Westside Regional Meeting

**JOIN US THURS. FEBRUARY 23RD, 2023
AT THE ALMOND WOOD'S THE GROVE AT 6PM**

**JOIN US FOR A GREAT DINNER, GUEST SPEAKER, ANTHEA HANSEN
& TO ELECT YOUR WESTSIDE BOARD MEMBERS**

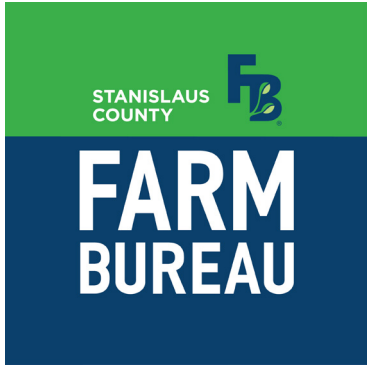


STANISLAUS COUNTY FARM BUREAU'S

Northeast Regional Meeting

**JOIN US TUESDAY, FEBRUARY 28TH, 2023
AT DYING BREED BREWING AT 6PM**

**JOIN US FOR A HOUSE OF BEEF DINNER, GREAT BEER, GUEST SPEAKERS, OIG
GM SCOTT MOODY AND SUPERVISOR BUCK CONDIT
& TO ELECT YOUR NORTHEAST BOARD MEMBERS**



Website



Facebook



Instagram



Join us this February for your Region's Meeting.

Call 209-522-7278 to RSVP or register online at
<https://stanfarmbureau.org/events/>

Each meeting includes a meal, guest speaker and time with your region's Farm Bureau Members. See you there!



FRIDAY REVIEW

LEGISLATIVE AND GOVERNMENTAL AFFAIRS

2023-2024 STATE BUDGET PROPOSAL

On Tuesday, January 10th, Governor Newsom unveiled a summary of his proposed budget for the 2023-2024 fiscal year. This upcoming fiscal year will face significant economic headwinds with an initial \$22.5 billion deficit with the potential to increase by the time May revise comes around. It is interesting to note that the Governor's budget does not currently propose to draw from the current reserves of \$35.6 billion until there is clarity on our economic condition before May. As we engage in the coming weeks and months with the legislature and stake holders, we will continue ensure that investments made related to California Agriculture continue to be a priority. Below are specific items in Governor Newsom's proposed budget relevant to agriculture.

Agricultural Employment

The Governor's proposed 2023-24 budget provides \$11.7 million special funds and 42 positions in 2023-24 and \$6.5 million special funds ongoing to help address wage claim processing times and automate portions of the claims processing activities within the Wage Claim Adjudication unit.

The Agricultural Labor Relations Board has submitted a Budget Change Proposal (BCP) requesting an additional \$1.113m to fund three new attorneys and three new field examiners to implement the Card Check bill signed by Governor Newsom (AB 2183). It is unclear if this BCP anticipates workload changes that could result if the Legislature passes revisions to

AB 2183 jointly announced by the Governor, the California Labor Federation, and the United Farm Workers when the Governor signed AB 2183.

Department of Food and Agriculture

Due to the nature of this year's budget many departmental programs were subject to changes and funding reductions. The January proposal protects 90% of General Fund investments from 2021-22 and 2022-23 for Departmental Programs. Here are a few examples of the proposed budgetary allocations. Programs which remain fully funded

- Farm to School Incubator : \$90 million
- Water efficiency Technical Assistance: \$20 million
- Livestock Methane Reduction Program (AMMP/DDRD): \$48 million

Programs with funding reductions:

- State Water Efficiency and Enhancement Program (SWEEP): \$40 million reduction, leaving \$70 million for next solicitation
- Healthy Soils Program: \$15 million reduction, leaving \$70 million for next solicitation
- Pollinator Habitat Program: \$15 million reduction for 2022-23, leaving \$15 million for the previous 2021-22 solicitation

Cannabis

• \$83.9 million Cannabis Tax Fund is allocated to the Board of State and Community Corrections through Allocation 3 to award grants to local governments to assist with law enforcement, fire protection, or other local programs.

• \$6.4 million Cannabis Control Fund and \$5.7 million in other special funds, which will increase over time to \$13.1 million Cannabis Tax Fund and \$6.6 other special funds, to continue the State Water Resources Control Board's statutorily mandated efforts to address water quality and instream flow-related impacts from cannabis cultivation.

• \$3.8 million Cannabis Control Fund and \$4.2 million Fish and Game Preservation Fund to continue the Department of Fish and Wildlife's Cannabis Regulatory and Enforcement Program.

Energy and Utilities

The budget includes \$897 million in General Fund reductions and \$370 million in General Fund delays to future years. If there is sufficient General Fund in January 2024, up to \$410 million of these reductions will be restored. This lowers the funding provided for energy programs provided in the 2022 Budget Act from \$7.9 billion to \$7 billion. Key changes to the funding include the following:

- Reverts \$400 million in California Emergency Funds in 2022-23 to the General Fund, for savings from the California Arrearage Payment Program, based on actual applications received and approved for funding.
- Reduces \$270 million General Fund in 2023-24 from the Residential Solar and Storage program at the Public Utilities Commission. This maintains approximately \$630 million (70 percent) for solar and storage incentives for low-income utility customers.
- Reduces the Long Duration

Energy Storage Program at the California Energy Commission (CEC) by \$50 million General Fund, or 13 percent.

• Decreases the Carbon Removal Program at the CEC by \$25 million, a 25 percent reduction.

• Decreases the Transmission Financing Program at the California Infrastructure Bank by \$25 million in 2023-2024, or 10 percent.

• Cuts the Low Global Warming Pollutant Refrigerants program at the Air Resources Board by \$20 million, or 50 percent.

• Reduces the Food Production Investment Program at the CEC by \$10 million in 2022-2023, or 13 percent.

• Cuts the Industrial Grid Support and Decarbonization Program at the CEC by \$10 million in 2022-23, or 10 percent.

• Delays \$370 million of funds in the current year and the budget year to future years for the Equitable Building Decarbonization Program at the CEC. Eliminates \$87 million in 2025-26, or 9 percent of the multi-year total.

SB 846 (Dodd) proposed \$1 billion over three years beginning in 2023-24 for a Clean Energy Reliability Investment Plan, subject to later appropriation. The budget proposes an initial allocation of \$100 million in 2023-24 from SB 846 Clean Energy Reliability Investment Plan funds.

Delays \$150 million in the current year and the budget year to 2026-27 for the Climate Innovation Program at the CEC.

SB 1020 (Laird, Atkins, Caballero and Durazo), the budget includes \$4 million from various funds (General Fund, Cost

of Implementation Account, Greenhouse Gas Reduction Fund, and Public Utilities Commission Utilities Reimbursement Account) in 2023-24, and additional ongoing funds, across multiple agencies to support implementation for advancing new clean energy targets.

Rural Broadband

The 2021 Budget provided \$6 billion over three years as part of a statewide plan to expand broadband infrastructure, increase affordability, and enhance access. Of this amount, \$3.25 billion was provided to the California Department of Technology (CDT) for the purpose of building an open-access middle-mile network in un-

served and underserved areas of California.

The 2023-24 Budget maintains the same level of funding for broadband middle-mile, last-mile, and the Loan Loss Reserve Fund activities. However, to address the budget problem, the Budget proposes:

- Deferral of \$550 million at the CPUC for last-mile infrastructure grants in 2023-24 to future years (\$200 million in 2024-25, \$200 million in 2025-26, and \$150 million in 2026-27).
- Deferral of \$175 million from 2022-23 and \$400 million from 2023-24 for the Loan Loss Reserve Fund at the CPUC to future years (\$300 million in 2024-25 and \$275 million in

2025-26).

Rural Health and Safety

- Includes \$10 million (Opioid Settlement Fund) for fentanyl program grants to increase local efforts on education, testing, recovery, and support services associated with the implementation of AB 2365 (Patterson, Chapter 783, Statutes of 2022).
- Proposes \$4 million to support innovative approaches to make fentanyl test strips and naloxone more widely available.

Transportation

ZERO EMISSION VEHICLES (ZEVs)

- Reduces ZEV spending adopted in the 2021 and 2022 budgets by 11 percent from \$10 billion to \$8.9 billion. This includes \$2.5 billion in General Fund reductions, offset by a fund shift of \$1.4 billion to the Greenhouse Gas Reduction Fund (GGRF). It also includes a mechanism to allocate additional discretionary GGRF funds toward ZEV programs. Specific program changes include:
 - Reduces equitable zero-emission vehicle and infrastructure funds by \$745 million from the General Fund, offset by a \$535 million fund shift to GGRF. This equals a 9 percent reduction.
 - Reduces ZEV mobility programs by \$184 million in General Fund, with an offset of \$25 million from GGRF. This equals a 53 percent reduction.
 - Reduces heavy duty ZEV investments by \$1.5 billion from the General Fund, offset by an \$839 million offset from GGRF. This equals an 11 percent reduction.
 - Reduces emerging opportunities and federal programs by \$133 million in General Fund, with an offset of \$40 million in GGRF. This equals a 7 percent reduction.
 - Expresses intention to work with the Legislature to extend the AB 8 (Chapter 401, Statutes of 2013) fees that fund ZEV infrastructure and vehicle incentives.

Proposes reductions over three

years to future transportation and transit infrastructure funding as follows:


- o Reduces planned funding in 2023 and 2024 from \$2 billion each year to \$1 billion in 2023 and \$500 million in 2024 and 2025. States that if there are sufficient revenues, these funds will be restored.
- o Reduces \$500 million from General Fund, with a \$300 million reduction restored from the State Highway Account, for a net reduction of \$200 million for Active Transportation.
- o Shifts \$200 million General Fund with \$200 million State Highway Account funding for the Climate Adaptation Program.
- o Delays \$350 million originally planned in 2023-24, which will be available in 2025-26 for grade separations.
- o Funding Agricultural Replacement Measures for Emission Reduction (FARMER) remains funded at \$150 million.

Water Resources

The 2021 and 2022 Budget Acts committed \$8.7 billion over multiple years to support drought resilience and response designed to help communities and fish and wildlife avoid immediate negative impacts because of extreme drought, while continuing to advance projects and programs that prepare the state to be more resilient to future droughts and floods.

The 2023-24 Budget maintains \$8.6 billion (98 percent) of previously committed funding to minimize the immediate economic and environmental damage from the current drought and support hundreds of local water projects to prepare for and be more resilient to future droughts. The 2023-24 Budget includes \$194 million in General Fund reductions across various programs.

See Review on page 9



Since 1986

- **State of the Art Equipment**
- **80' Truck Scale**
- **Maximized Returns**
- **Owner Operated**
- **Inshell line complete with Satake color sorter**
- **High Capacity dryer for bin or bulk loads**

Peter Verdegaal
209-628-1008

Office
209-356-0210

8016 Winton Way, Winton
Serving Stanislaus & Merced Counties

FREE ADS FOR FARM BUREAU MEMBERS

As another membership service, Farm Bureau members are offered FREE classified advertising in the Stanislaus Farm News. Ads must be 18 words or less and only one ad per month per membership (membership number required.) Ads may be MAILED to the Stanislaus Farm News, or BROUGHT to the SCFB office, 1201 L Street, Downtown Modesto. NO PHONE-IN OR FAX free ads will be accepted. Free ads are restricted to farm machinery or equipment or unprocessed farm products. Farm jobs wanted or offered will also be accepted. No real estate ads and no commercial items or services will be accepted. 209-522-7278

Classified Ad's \$4.40 per run.

COPY DEADLINE: MONDAY 12 NOON

RATES: Display rates on request. Terms are cash. Ads should be paid for at time of first insertion or immediately after receipt of bill if order is placed by telephone or mail.

ERRORS: The Stanislaus Farm News will not be liable for more than one incorrect insertion. Errors must be called to the attention of the Classified Advertising Department not later than 4 p.m. on the Tuesday following publication of the ad. Claims for adjustment must be made within 15 days. We reserve the right to reject or revise any advertisement.

120 SPECIAL NOTICES

REPLACEMENT WINDOWS CUT YOUR ENERGY BILLS ELIMINATE DUST & NOISE

Lowest Prices Guaranteed! Largest Selection in the Valley! Windows, Doors, Skylights, Soundproofing, Licensed, Bonded & Insured. Visit Our Showroom: 1050 Kansas Ave., Modesto Cal Comfort Insulating Windows, Inc. Contractors Lic. #51317 Class C17B 209-527-1310 (TFN)

300 Employment

Service Mechanic, duties include greasing, changes air filters and oil, etc. Pays \$15/hour with a harvest bonus. Must be willing to work 6 days a week. Opportunity for longer employment based on job performance and experience. Call Jenn for more details: 209-648-7947

500 FARM EQUIPMENT

For Sale:

Metal milkcans with lids

Heavy duty ripper, 3 shanks, \$3,000

150 gal water tank, \$1,800, used one season, on frame w/ wheels, new tires and gravity flow All Items OBO

Contact Arby: 209-505-0555 or text: 209-602-1400

Trailer axle, 84" tread with spring wheels & good tires \$15, Ceres Cell: 209-537-9491

1955 Fordson Major Diesel Rears and Sprayer & Implements Tires 85% Runs Great Sonora \$6k Call 209-768-6060

Spring tooth with attached following harrow. 8 ft wide, 3 point hook-up asking \$1000

Brush rake. Rear push. 9ft wide adjustable spacing for 4 or 5 forks asking \$1000 Text or leave VM for 209-505-1731

For Sale:

John Deere 5100ML low profile with Exact cab
Verisimo flail mower - 12' & 8'
PBM 500 gallon sprayer with electric valves (never used)
Durand Wayland 500 gallon sprayer
Domries float leveler - 12'

Call Joe: 209-404-3326

Great Plains no-till corn planter 8-row model YP825A-0830 It has a john blue injection pump. Great condition. #22,000 OBO phone 209-874-4042 or 209-765-6298

500 FARM EQUIPMENT

Verisimo Might Max fail mower. Model # SC-100 asking \$5000 Orchard float roller 9ft wide asking \$1000 Text or leave a VM 209-505-1731

1/2" x 10' EMT used as walnut stakes. For more information please call (408) 313-8763

510 LIVESTOCK

Kenyon Organic Services Organic Consulting Services Crop and Livestock Carol Kenyon (209) 484-1097 ck.cattle23@gmail.com

Sale Alfalfa. Best price, great quality. Bigger Bales especially suited to horses. Cook Valley Angus Ranches Modesto 209 996 7365 & Available May- Oct

800 For Rent

House for Rent \$1500.00 & Deposit \$1700 2 bedroom, 1 bathroom, Large kitchen & livingroom, Single car garage, Riverbank 681-9286

900 REAL ESTATE

Cherry Orchard in the Wood Colony 59+/- Acres. Excellent soil comprised of 75% Hanford sandy loam (HdpA). MID irrigation with micro jet sprinklers. 2,500 sq. ft. Metal Barn included. \$2,330,000 Simvoulakis Real Estate 209.985.9700 BRE #705092

Mobile Home For Sale

Double wide mobile home 1100 sq ft in senior park. All up grades, tile floors, crown molding, gas range, Composition roof, Vaulted ceilings, must see, move in ready, Terms available or \$85,000 Ken (209) 204-6691

1000 SERVICES

Electrical and Refrigeration Service No job to small. Troubleshooting, upgrades on home, ranch, dairy, and commercial buildings. 209-648-7748

1000 SERVICES

Martin Reyes Land leveling Discing Chiseling Lice.#954989 (209) 605-4079

Haney & Associates Ag/Investment Properties Marcus Haney REALTOR®, CA BRE #01917446 Contact me at 209/605-6727 and visit MarcusHaney.com

Noeller Farm farm & ranch management Almond, Peaches, Walnuts custom Almond & Walnuts (209) 883-2417 or (209) 606-2084

PROAG Commercial Ag. Spraying Orchard, vineyard \$ herbicide applications 209-613-6355 Pat, 209-678-8072 Matt, 209-613-3227 Justin Visit proag.webs.com

RON MARTELLA Custom Nut Harvesting SHAKING, SWEEPING AND HARVESTING 883-4819 or 883-0690

Woodbridge Spraying Field Spraying Orchard Spraying Backhoe 380-0727 (TFN)

Orchard Brush Pile Grinding Service Brush • Stumps • Huller Twigs Davis Ag & Ranch Clean Up CA. Contractor Lic#796783 209-670-5278

We haul Rock, Sand, Gravel, Demolition Clean Up & Removal, Tree Holes, Irrigation Lines & More. Lic. # 884701 Home-(209) 848-0538 Cell (209) 525-7715 (TFN)

Wilson Portable Welding Structural • Fabrication • General Repair • Dairy Repair • Ag Repair • Mobile - 765-3596 • Shop - 524-3016 (TFN)

Need help with your Farm Labor? Call Lencioni Farm Services 209-537-2186

1100 MISCELLANEOUS

METAL BUILDINGS Provided & installed, interior upgrades available, fully engineered, references available. Active Industrial Contracting Michael Frost - 613-3548. Lic. #735904 (TFN)

LOWCOSTHOUSING Largest Inventory in Valley of Prowound Mobile Homes. Approx. 100 to choose from. Priced to fit your Budget. Transportation Available. DLR. 209-632-0854.

Thank you for your Membership.
For the GOOD of your FOOD.

ROOFING • FENCING • PLYWOOD • SIDING



Let's Build Together
Since 1953

Denair Location: (209) 632-2494

Riverbank Location: (209) 869-4424

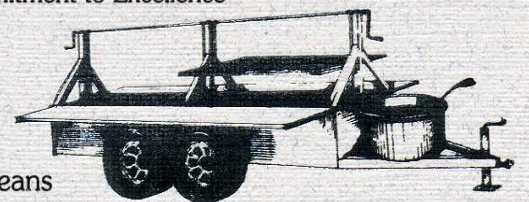
www.DenairLumberCo.com

HARDWARE • INSULATION • WINDOWS • O.S.B.

Neto's Catering
Commitment to Excellence

Specializing in:

B.B.Q Steaks - Ribs
Pork - Chicken
Seasoned Meats
Fred's Portuguese Beans
Party Platters
Deli Spreads



ALL OCCASIONS / FREE ESTIMATES
1318 N. Golden State Boulevard, Turlock, CA

FRED NETO & SONS
(209) 669-FRED
Fax (209) 669-0545



VAN DE POL
FUELS & LUBRICANTS

Celebrating 75 years of serving the
San Joaquin Valley!

We're your strategic partner - delivering
great service with roots in the local community.

Performance delivered.

Fuels | Lubricants | Renewable Diesel
Industrial Fluids | Diesel Exhaust Fluid
209.667.0236 | vandeopol.us

FARM BUREAU SUPPORTING BUSINESS MEMBERS



- **Aemetis Biogas LLC**
Keyes 497-4034
- **American AgCredit**
Turlock 667-5101
- **Basi Insurance**
Oakdale (209) 847-3065
- **Bays Ranch**
Westley 894-3472
- **Beard Land Improvement Co**
Modesto 524-4631
- **Dave Wilson Nursery**
Hickman 874-1821
- **Flory Industries**
Salida 545-1167
- **Frank Borba Custom Chopping**
Modesto 652-8201
- **Grower Direct Nut Company**
883-4890
- **Haidlen Ford**
Oakdale 847-0356
- **Heinrich Farms Inc**
Modesto 595-2207
- **Hilmar Cheese Company, Inc.**
Hilmar 667-6076
- **Modesto & Empire Traction Co.**
Modesto 524-4631
- **Nationwide Insurance**
Sacramento (530) 701-4486
- **Wenger Ranch Inc.**
Modesto
- **PG&E**
Modesto 726-6303
- **Sierra Grain Terminal**
Turlock 667-2002
- **Stanislaus County Sheriff's Department**
Modesto 525-7117
- **Stanislaus Farm Supply**
Modesto 765-1142
- **TriCal**
Oakdale (831) 245-7611
- **Yosemite Farm Credit**
Turlock 667-2366

- Ag Services**
- **Anteris**
Turlock (559) 472-6415
 - **All West Select Sires**
Turlock 667-8378
 - **Exact**
Modesto 544-8600
 - **FISHBIO**
Oakdale 847-6300

- **Green Rubber**
Modesto (888)273-2464
- **Rumble Ag Service**
Modesto 545-1848
- **West Valley Agricultural Service**
Westley 894-3121

- Attorney**
- **Ross W. Lee**
Modesto 521-9190
 - **Jensen & Jensen**
Modesto 529-0791

- Banking/Financial**
- **Agri Business Financial Inc**
Oakdale 607-0037
 - **Central Valley Community Bank**
Fresno 559-323-3472
 - **Edwards, Lien & Toso**
Hilmar 634-9484
 - **Farmers & Merchants Bank**
Riverbank 571-4023

- **Grimbleby Coleman CPA's Inc**
Modesto 527-4220
- **Moss Adams**
Stockton 955-6100
- **Oak Valley Community Bank**
Oakdale 844-7500
- **Vermeulen Company CPA**
Ripon 599-5051

- Sales**
- **American Chevrolet**
Modesto 575-1606
 - **Honda Kawasaki of Modesto**
Modesto 529-5424
 - **Intero Stanislaus**
Sacramento (916) 671-2358
 - **Smith Chevrolet Co Inc.**
Turlock 632-3946

- Construction/Engineering**
- **Stump Construction**
Modesto 505-9730
 - **Branelle Properties LLC**
Oakdale 595-0256
 - **MHK Construction Inc.**
Hughson 648-2107
 - **Hawkins & Associates Engineering**
Modesto 575-4295

- Equipment & Repair**
- **Acosta & Daughters LLC**
Waterford 872-4815
 - **Belcorp Ag LLC, John Deere Dealer**
Modesto 538-3831
 - **Coit & Hewes LLC**
Modesto 985-0559
 - **Garton Tractor Inc.**
Turlock 632-3931

- **G&F Ag Services**
Escalon 599-8911
- **Hotsy**
Modesto 578-3925
- **Pacific Distributing Inc.**
Hughson 883-4032
- **RAYCO**
Modesto 529-8984
- **Turlock Auto Parts**
Turlock 634-4968
- **Turlock Dairy & Refrigeration**
Turlock 667-6455

- Farms/Dairies**
- **Ahlem Foothill Farm**
Turlock 874-2477
 - **Bobby Yamamoto Farms**
Westley 835-1750
 - **Braden Farms**
Hughson 883-4061
 - **Carol Morrett**
Hughson 537-6658
 - **Catherine Phipps Walden**
Ballico 667-2409

- **D & M Ag.,**
Denair 667-7783
- **David Lemos**
Modesto 541-3131
- **Donlon Farms Inc.**
Patterson 892-8543
- **E Roen Ranches**
Winnemucca 614-5944
- **Fire Lake Jersey**
Hilmar 632-2924
- **Frank Dutra**
Oakdale (209) 402-0796
- **Fowler Brother Farming**
Waterford 409-4951
- **Glory Farms**
Waterford 522-4302
- **G3 Enterprises**
Modesto 1-800-321-8748
- **Hilltop Ranch, Inc.**
Ballico 874-1875
- **Kline Ranch**
Waterford 605-7741
- **Knott Farms**
Modesto 581-2571

- **Melvin Wheeler**
Modesto 526-9770
- **Marchy Dairy**
Ceres 537-0630
- **McManis Farms Inc**
Modesto 541-9345
- **Melo Farms LLC**
Turlock 585-7852
- **Michael Van Anandel**
Modesto 531-4667
- **Nick Blom**
Modesto 522-6140
- **Redwood Ranches LLC**
Hughson 883-2603
- **Robert Gioletti**
Turlock 667-6024
- **Ron Martella Farms**
Hughson 883-4819
- **Schut Ranches**
Patterson 892-6226

- **Starkey & Lucas Farming & Cattle**
Ceres 484-0671
- **Stewart Johnson**
Ceres 602-8899
- **Victor M Lopes**
Turlock 587-5026
- **Weaver Bros**
Crows Landing 854-6716
- **Wyeth Dairy Inc.,**
Modesto 545-2101

- Farm Management**
- **Benchmark Farm Management**
Riverbank 869-4290
 - **Grover Farm Management**
Modesto 602-3031
 - **Lake Road Grizzly Ranch**
Pomona (909) 623-1392
 - **Fisher Capitol Investments**
Modesto

- Feed/Farm Supplies**
- **A.L. Gilbert**
Keyes 632-2333
 - **Blue Mtn. Minerals**
Columbia, 533-0127
 - **Conlin Supply**
Oakdale 847-8977
 - **NuWest Milling LLC**
Hughson 883-1163

- Insurance**
- **Arrowhead Insurance Agency**
Modesto 524-6157
 - **DiBudo & DeFendis**
Fresno 557-2759
 - **Hoobler Insurance Services**
Patterson 601-0418
 - **InsureCAL Insurance**
Turlock 250-0269

- **LG Crop Ins.**
Turlock 262-8140
- **Rico Pfitzer Pires Insurance Agency**
Gustine 854-2000
- **Stewart Kriese Ins Agency**
Oakdale, 847-8025
- **Western Valley Insurance Associates**
Turlock 634-9031

- **Winton Ireland Strom & Green**
Turlock, Modesto, Livingston and Hilmar 667-0995

- Irrigation/Utilities**
- **Customized Water System**
Turlock 988-4833
 - **Don Pedro Pumps**
Turlock 632-3161
 - **IJ Larsen Pumps**
Modesto 529-2020
 - **Modesto Irrigation District**
Modesto 526-7373
 - **Oakdale Irrigation District**
Oakdale 847-0341

- **Turlock Irrigation District**
Turlock 883-8374
- **Waterford Irrigation Supply**
Waterford 847-1387

- Misc. Services**
- **Alexandria Perrin LLC**
Modesto 216-7027
 - **Casey Moving System**
Ceres 531-9010
 - **Clark Pest Control**
Modesto 556-5200
 - **Cover Specialty Services**
Modesto 988-3864
 - **Drone for Hire**
Modesto 818-4109

- **Modesto Nuts Baseball Club**
Modesto 572-4487
- **R & J Avila**
Hilmar 678-1723
- **Rocha's Valley Enterprises**
Oakdale 581-1473
- **Quality Rodent Control, Inc.**
Modesto 225-4124

- Non-Profit**
- **Almond Alliance**
Modesto 559-5800
 - **Almond Board of California**
Modesto 672-9743
 - **CA Farmland Trust**
Elk Grove 916-544-2712
 - **Central Valley Hispanic Chamber of Commerce**
Modesto 789-5123
 - **Modesto Chamber of Commerce**
Modesto 577-5757
 - **Oakdale Chamber of Commerce**
Oakdale 847-2244

- Nurseries/Horticulture**
- **Blumen Flower Farm**
Modesto 648-8995
 - **Burchell Nursery**
Oakdale 845-8733
 - **California Transplants**
Newman 862-9420
 - **Dutch Hollow Farms**
Modesto 287-6010

- **Park Greenhouse**
Ripon 599-7545
- **Roos Tree Nursery**
Empire 847-2520
- **Morris Nursery**
Riverbank 527-5553

- Petroleum**
- **George W. Lowry**
Salida 545-0791
 - **Valley Pacific Petroleum**
Stockton (209) 948-9412
 - **Hunt & Sons, Inc.**
Modesto 522-7291
 - **Van de Pol Enterprises**
Keyes 667-0236

- Processors**
- **Grizzly Nut**
Waterford 874-5223
 - **Turlock Walnut Co.**
Turlock 668-0955
 - **Travaille & Phippen**
Manteca 599-6111

- Restaurant**
- **Medlen's House of Beef**
Oakdale 847-4379
 - **The Fruit Yard**
Modesto 577-3093
 - **Rodin Farms**
Oakdale
 - **Rodin Ranch**
Modesto 577-3224

- Safety**
- **AgSafe**
Modesto 526-4400
 - **Cal Ag Safety**
Oakdale 351-7092

- Veterinary**
- **Adian Equine**
Oakdale 847-8258
 - **Dairy Veterinary Services**
Escalon 551-3949

For the **good** of your **food**.

Storms, snowpack spur optimism for ample water supply for farmers

A year ago, California's first snowpack survey of the year revealed deep snow measuring 160% of average. Then came the driest January, February and March in more than 100 years. This year the snowpack measured 174% of average on Jan. 3—and ensuing storms dumped another 10 feet of snow in parts of the Sierra Nevada. At last, that may presage a healthy water year for agriculture. A state climatologist says the string of atmospheric storms signals that California may be moving from a dry La Niña pattern to a wet El Niño phenomenon.

Agricultural groups say 'Waters of U.S.' law creates confusion, burdens farmers

Farm groups say they fear the Environmental Protection Agency's new "Waters of the United States" rule will create confusion and cause disruptions to routine agricultural activities. The rule expands the federal government's reach, allowing regulation of most any low spot on a farmer's field where water stands or channels. Critics say that may expose farmers to unknowing violations of the law and require permits for ordinary activities such as plowing, planting or fence building. Agricultural groups say the law could result in costly legal fees for farmers.

Farmers, ranchers challenged by rule banning older trucks

Large trucks and buses made before 2010 are now prohibited from operating in California, under a California Air Resources Board rule that took effect Jan. 1. Until this year, an agricultural exemption had allowed pre-2010 big rigs to run up to 10,000 miles a year. Now farmers and ranchers with non-compliant vehicles must abide by a 1,000-mile limit. The market is already saturated with older vehicles retaining little value, and many business owners face steep financial costs to replace them.

Researchers hail new rice-breeding effort as a breakthrough

An international team, including researchers at the University of California, Davis, has successfully propagated a commercial hybrid rice strain as a clone through seeds—with 95% efficiency. According to researchers' conclusions published in Nature Communications, the development may help lower the costs of hybrid rice seed, allowing rice farmers worldwide to obtain access to high-yielding, disease-resistant strains. Historically, rice has been costly to breed as a hybrid, with previous yield improvements of only about 10%.

Storms bring hope for agriculture, but inflict damage on crops

Historic storms over the past two weeks piled deep snow in the Sierra Nevada, provided some relief for depleted reservoirs and brightened water-supply prospects for agriculture. But they also inflicted a harsh toll, with showers, mudslides and fierce winds combining to ruin thousands of acres of crops with filthy water while wreaking havoc on orchards. Crops from strawberries to broccoli suffered damage in the Salinas Valley. Wheat and alfalfa took a beating elsewhere. And farmers fretted as uncaptured stormwater poured into the ocean.

California cage-free rule creates financial headaches for egg farmers

California egg farmers say they have been hard hit by costs of going cage-free, as is now required under state law. Many say the demands are causing them to miss out on high current egg prices. John Lewis Jr., president of Farmer John Egg Farm in Bakersfield, said the operation will close at the end of this month because it can't afford \$4 million to \$5 million in costs to retrofit the farm

See Storms on page 16



YOUR FUTURE GROWS HERE.

COMMITTED TO SERVING YOUR NEEDS.

The change in agriculture today is just a glimpse of what lies ahead. It's why, more than ever, we are committed to being the partner you can trust, who understands your needs and delivers value to help you achieve your goals.

Wherever agriculture goes, we'll be there, alongside you, as you lead the way.




**American
AgCredit**

Your future grows here



SCAN ME

Visit agloan.com/growyourfuture

A Part of the Farm Credit System.  Equal Opportunity Lender.

From Review on page 5

In addition, the 2023-24 Budget also includes new investments to continue supporting the state's drought response, accelerate implementation of the state's water supply strategy, and increase flood preparedness and response.

The Department of Water Resources receives new budget funds, primarily to address flood risk. The missing component in the 2023-24 Budget is stormwater capture and storage investment, to better bifurcate the state's flood protection and water storage roles.

- Delta Levees—\$40.6 million General Fund for ongoing Delta projects that reduce risk of levee failure and flooding, provide habitat benefits, and reduce the risk of saltwater intrusion contaminating water supplies.
- Central Valley Flood Protection—\$25 million General Fund to support projects that will reduce the risk of flooding for Central Valley communities

while contributing to ecosystem restoration and agricultural sustainability.

- 2023 Drought Contingency—\$125 million General Fund one-time as a drought contingency set-aside to be allocated as part of the spring budget process, when additional water data will be available to inform future drought needs.
- Planning and Permitting for New Water Supplies—\$4.7 million Waste Discharge Permit Fund in 2023-24, and \$5.7 million Waste Discharge Permit Fund and \$408,000 Safe Drinking Water Account ongoing to support planning and permitting for projects that produce new water supplies.
- Modernizing Water Rights—\$31.5 million General Fund one-time in 2023-24 to continue development of the Updating Water Rights Data for California Project to enhance California's water management capabilities.
- San Joaquin River Basin Groundwater Recharge: Water Availability Analysis and Technical Assistance—\$4.9 million

General Fund over five years to continue to provide local water districts methodologies and tools to conduct water availability analyses, which will help facilitate groundwater recharge, one of the core pillars of the Water Supply Strategy.

The 2023-24 Budget proposes to adjust previous water spending commitments through the following budget reductions across various Department of Water Resources, and Department of Food and Agriculture programs:

- Watershed Resilience Programs—A reduction of \$24 million General Fund in 2023-24 and a delay of an additional \$270 million General Fund to 2024-25. This maintains approximately \$470 million (95 percent) across various

watershed resilience programs.

- Perfluoroalkyl and Poly-fluoroalkyl Substances (PFAS) Cleanup—A reduction of \$70 million General Fund in 2023-24 and a delay of an additional \$30 million General Fund to 2024-25. This maintains approximately \$130 million (65 percent) of PFAS cleanup resources.
- Water Recycling—A reduction of \$40 million General Fund in 2023-24. This maintains approximately \$760 million (95 percent) to support water recycling and groundwater clean-up.
- Water Refiling Stations at Schools—A reduction of \$5 million General Fund in 2022-23, which eliminates funding for this purpose
- State Water Efficiency and Enhancement Program (SWEEP). A reduction of \$40 million General Fund in 2022-23. This maintains approximately \$120 million (75 percent) for SWEEP.

Wildfire and Forestry

In response to the significant health, environment, and economic impact from wildfire, the 2023-24 Budget maintains \$2.7 billion (97 percent) of funding to advance critical investments in forest health and fire prevention to continue to reduce the risk of catastrophic wildfires, as well as resources for fire protection in the state's wildfire response.

The 2023-24 Budget includes \$91 million in General Fund reductions across various programs: however, both the Office of the State Fire Marshall and CalFIRE experience budget increases growing to \$64.465 million and \$3.4 billion, respectively, by 2024. While there will be budget adjustments as set forth below, Governor Newsom's initial budget indicates a continued commitment to forest health and wildfire mitigation, as seen from the modest predominately CAL FIRE reductions, below:

- The Climate Catalyst Fund at iBank which makes investments to support the advanced wood products, climate smart agriculture, and bioenergy markets

will incur a reduction of \$10 million General Fund in 2020-21 and \$31 million in 2021-22. This maintains approximately \$8 million (16 percent) to support the fund.

- CalFIRE's Stewardship of State-Owned Lands will incur a reduction of \$10 million General Fund in 2022-23 and \$15 million in 2023-24. This maintains approximately \$280 million (92 percent) for resilient forests and landscapes on state-owned lands.
- CalFIRE Defensible Space Inspections incurs a reduction of \$5 million General Fund in 2023-24.
- This maintains approximately \$20 million (80 percent) to support defensible space inspections.
- CalFire Wildfire Monitoring and Research—A reduction of \$5 million General Fund in 2023-24. This maintains approximately \$33 million (87 percent) to support monitoring and research.
- CalFIRE Workforce Training—A reduction of \$15 million General Fund in 2023-24, which is partially offset by a shift of \$14 million to Proposition 98 for similar purposes. This maintains approximately \$53 million (98 percent) to support CAL FIRE work force training.

Wildlife

Department of Fish and Wildlife has received a one-time General Fund allocation in 2022-23 and \$1.3 million ongoing and five permanent positions at the Department of Fish and Wildlife to establish two new programs to support the management of fish and wildlife, recreational opportunities, and Tribal partnerships before and after removal of the Klamath Dam.

Stanislaus Farm Supply Board of Directors Annual Meeting

Stanislaus County Farm Bureau
1201 L Street, Modesto, CA 95354
10:00 AM on Wednesday, February 1, 2023

Election of Directors:
Frank Azevedo - Incumbent
Greg Nunes – Incumbent
Dave Wheeler - Incumbent

Interested candidates contact Nominating Committee Chair, John Barindelli at (209) 559-7395 or jbarindelli@gmail.com



Lawmakers Calling for Better California Water Management

Source: Brian German, AgNet West

As California experiences several atmospheric rivers bringing substantial precipitation to the state, lawmakers are highlighting the need for better water management. The storm systems are providing much-needed support to the state's existing water storage.

However, a majority of runoff is being lost to the Pacific Ocean. California's simultaneous drought and flood emergencies are raising questions about the state's overall approach to water supplies. Several lawmakers are encouraging a more appropriate response to the abundance of water California has been receiving. Six members of Congress sent a letter to President Joe Biden and California Governor Gavin Newsom seeking action in response to the recent storms.

"We ask you to maximize pumping of stormwater and unregulated flows in the Delta to the fullest extent possible. We also ask you to prioritize and expedite water storage projects that would help us better prepare for future storm events," the letter states.

"We urge your administrations to direct relevant federal and state agencies to waive all impediments that limit operations of the Delta pumps to ensure none of these storm flows go to waste."

Congressman Jim Costa is also encouraging officials to reevaluate the approach to water management in response to the recent storms. In a letter to Governor Newsom, U.S. Secretary of the

Interior Deb Haaland, and California Secretary of the Natural Resources Agency Wade Crowfoot, Congressman Costa outlines strategies to help California take advantage of the above-average rainfall. Congressman Costa is calling for the maximum conservation of available surface water, which includes pumping at the southern Delta Central Valley Project and State Water Project pumping plants. Congressman Costa also highlights the dire need for additional storage capacity to maximize the value of the increased precipitation.

"If we had completed the critical reservoir projects in the pipeline, such as raising San Luis Reservoir, expanding Los Vaqueros Reservoir, building Sites Reservoir, and building Del Puerto Canyon Reservoir, we would be in a position today to move and store more water both for flood control and water supply purposes at a time of abundant flows," the letter states. "We need to develop our infrastructure to be prepared for when the next intense storm event comes."



Stanislaus FARM SUPPLY

s.t.e.m.TM
SUCCESS THROUGH ENVIRONMENT MANAGEMENT

- Fertilizer
- Crop Protection
- Seed
- Feed
- Livestock
- Equipment
- Animal Health
- Garden Supplies
- And More!!!

Farm Supply Thanks You For Your Support!

As a farmer-owned cooperative we have been providing the Products, Services and Expertise that deliver consistent results for our growers since 1949.

Whether you're a Farmer or a Homeowner; we have you covered with the best products and services in the industry.



Open to the Public, Stop By Today!



Modesto
624 E. Service Rd.
Modesto, CA 95358
(209) 538-7070

Merced
674 S. Highway 59
Merced, CA 95341
(209) 723-0704

Kerman
12800 W. Shields Ave
Kerman, CA 93630
(559) 474-4400

"We Take Care of The Farmer...Because We Are Owned by The Farmer".

Have you seen this Jeep or Tractor?

Army Jeep, WWII
 December 11, 1941 commissioned
 Stolen September 21, 2022

Kubota Tractor
 Stolen December 3, 2022

Stolen during the night from a ranch in Modesto, near the intersection of Roselle Ave. & Sylvan Ave.
 Call Albert Gonzales with any information, 209-505-1752



FLORY

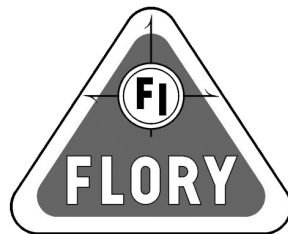
LEADERS IN NUT HARVESTING EQUIPMENT



34 Series Sweeper



860 PTO Harvester



SINCE 1936



8770 Self Propelled Nut Harvester



ST14 Shuttle Truck

For the finest in Agriculture Equipment and Metal Fabrication

See all our products at goflory.com

209-545-1167 Salida, CA

RAYCO INDUSTRIAL SUPPLY

Locally Owned and Operated Since 1969

Air Compressors
Used Tool and Machinery Dealer
Steam and High Pressure Cleaners
Metal Working Tools and Machinery
Power Tools, Wood Working Tools and Machinery
Hand Tools, Abrasives, Saw Blades and Safety Supplies
Automotive Tools and Equipment, Shop Heaters and Coolers

Sales and Service

California Contractors License 708487

The Largest Selection of Heavy Duty Shop Tools and Machinery In Northern California

Modesto (209) 529-8984
512 RIVER ROAD

Turlock (209) 632-2315
712 LANDER AVENUE

RUMBLE ORCHARD SERVICES

Topping & Hedging
 (Fall 2021: Hedging Down to 2')

Skirting

**Dual Mechanical
 Brush Stacking**

**Almond/Walnut
 Conditioning**

**Orchard
 Management**



Phil Rumble:
 (209) 996-1517

Matt Rumble:
 (209) 996-8161



American Farm Bureau Establishes 2023 Policies

New Grassroots Leaders Also Elected

Source: AFBF

Farmer and rancher delegates to the American Farm Bureau Federation's 104th Convention today adopted policies to guide the organization's work in 2023. Key topics ranged from expanding risk management programs and improving dairy pricing transparency to battling hunger.

Delegates were polled regarding their farms at the beginning of the voting session. The results show almost 99% (334 delegates) of those who cast votes operate family farms and almost 65% represent small- to mid-size farms as defined by USDA.

"Delegates demonstrated the strength of Farm Bureau by coming together to represent hard-working farm families from all 50 states and Puerto Rico," said AFBF President Zippy Duvall. "There's a lot of work to do in 2023 as Congress drafts the next farm bill, and the policies set forth today will guide AFBF as we work to ensure farmers and ranchers can continue to meet the growing needs of families in America and around the world."

Delegates to the American Farm Bureau business meeting voted to modernize the farm bill by expanding baseline funding, developing more flexible disaster relief programs and extending protection to more specialty crops.

They also voted to bring more transparency to the federal milk pricing system. Several changes to policy include support for more USDA audits of

processing costs to ensure data remains accurate, and a Federal Milk Marketing Orders voting procedure that requires cooperatives to communicate more clearly with members regarding proposed changes. The results of an FMMO forum hosted by AFBF in October served as a guidepost for policy changes. Recognizing growing food insecurity in the United States, delegates approved new policy to support access to nutrition programs including connecting farms directly with food banks, increasing the number of SNAP-approved food sales outlets, and other efforts to make produce available to families living in food deserts.

On trade, delegates added policy for USDA to continue working with the Mexican government to drop a proposed ban on imports of biotech corn. The new policy also encourages USDA to urge the Mexican government to accept established

science on the safety of U.S. biotech products.

Voting delegates also formalized Farm Bureau's position opposing the 2022 Waters of the U.S. rule and a proposed Securities and Exchange Commission rule if it requires Scope 3 emissions reporting from farms. Beyond policy changes, delegates also elected members to serve on the AFBF board of directors and national program committees.

Chris Hoffman, president of Pennsylvania Farm Bureau and Wayne Stafford, president of Maryland Farm Bureau (Northeast Region) were elected to fill one-year terms on the AFBF board of directors. Joe Newland, president of Kansas Farm Bureau (Midwest Region); and Scott Mugrage, president of Alaska Farm Bureau (Western Region) were elected to two-year terms on the AFBF board of directors.

See AFBF on page 29

WWW.GREENRUBBER.COM

Everything for Agriculture

Green Rubber - Kennedy Ag has the products, parts, accessories, and customer service you need to maximize your productivity.

- CUSTOM CONVEYOR BELTS
- URETHANE PARTS
- RENEWED BOGIE WHEELS
- PUMPS, HOSES, FITTINGS
- SPRAY NOZZLES & VALVES
- WATER TANKS & TANK TRAILERS
- SAFETY PRODUCTS & EQUIPMENT
- PRESSURE WASHERS & ACCESSORIES
- AND MUCH MORE!

Green Rubber
Kennedy Ag
Ag Industrial Supply
Belting & Fabrication

Six locations to serve you. Call today!

SALINAS (831)753-6100 · MODESTO (209)538-6227 · GREENFIELD (831)674-0999
WATSONVILLE (831)761-9395 · SANTA MARIA (805)878-8877 · YUMA (928)726-6560





Pesticide Handler Training

Thursday, February 16

Spanish Class

9am to 11am

English Class

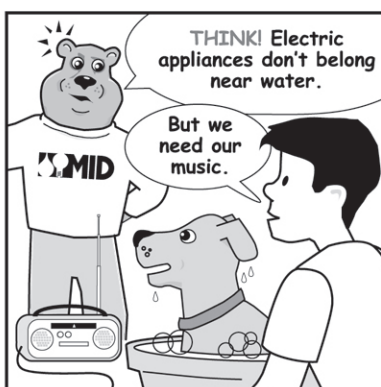
1pm to 3pm

Members \$60

Nonmembers \$75

Trainer: CalAg Safety

At Stanislaus County Farm Bureau Office
 Register Using the QR Code or go to:
<https://stanfarmbureau.org/events/>
 Call 209-522-7278 with Questions



Floyd Zaiger's Passion Continues in the Next Generation

By: Anna Genasci

In an article written in June of 2020 when Floyd Zaiger passed at 94 years old, he was described as the “world’s greatest fruit breeder.” Having never met Floyd myself, I was able to chat with his daughter Leith Gardner and granddaughter Tracee Bettencourt. Leith described fruit breeding as her dad’s passion, “his knowledge and imagination, especially his imagination,” is a memory that invokes a smile.

But where did Floyd’s fruit-breeding-passion begin?

David Karp, a food writer and farmer, wrote this about Floyd just over two years ago.

Chris Floyd Zaiger was born April 26, 1926, in Kennard, Neb., to Christian Fredrick Zaiger and Anna Marie Zaiger, the middle child of nine. His mother called him “Floyd” to distinguish him from his father, who was known as “Chris.” His family, which farmed in Iowa and later Oregon, was poor, and he left school after eighth grade. During World War II he served as a paratrooper with the U.S. Army 11th Airborne Division.

After the war he got his general equivalency diploma, attended UC Davis with support from the G.I. Bill, and graduated with a degree in plant pathology. He married Betty Jean Taylor in 1950, and taught high school in Modesto, where he started breeding azaleas and rhodo-

dendrons as a hobby. Fred Anderson, a fruit breeder known as the inventor of the modern nectarine, took him on as an apprentice in 1956 and Zaiger learned quickly. He soon struck out on his own, running an ornamental nursery by day as he pursued his dream at home by moonlight.

He focused on improving stone fruit — peaches, nectarines, apricots, plums and cherries — and introduced his first variety, Royal Gold peach, in 1965. But he dreamed of combining plums and apricots, his two favorite fruits, like his hero, Luther Burbank, the great turn-of-the-century fruit breeder. Burbank had managed to partially overcome interspecies sterility and hybridize plumcots (half plum, half apricot), but most were small and sour, or unproductive, and they never caught on.

By making thousands of crosses, Zaiger discovered plumcots with good flavor, size and productivity.

He released a few, such as Plum Parfait and Flavorella, but the real breakthrough came when he backcrossed plumcots to plums, creating interspecific plums that he trademarked as Pluots.

These new varieties — starting with Flavor Supreme, Flavor Queen and Flavor King — were sweet, juicy and rich, and along with later varieties, revolutionized the plum category.

Today interspecific plums from the Zaigers and other breeders account for three-quarters of plum production in California, his daughter estimated.

In the 19th century, exquisitely aromatic white-fleshed peaches and nectarines were common, but so easily bruised they couldn’t be shipped, and by the mid-20th century more durable yellow-fleshed varieties pre-dominated.

Zaiger crossed tender low-acid white peaches with firmer yellow types to create low-acid white-fleshed peaches and nec-

tarines that were sweet when firm enough to ship, like the almost preternaturally sugary Arctic Rose. Low-acid yellow varieties followed, and today peaches and nectarines with low and intermediate acidity abound.

Zaiger and his family invented many other fruit types, including interspecific apricots, sold as Apriums; cherries with winter chilling requirements so low they can be grown in Los Angeles; crosses of cherry and plum; crosses of peach, apricot and plum sold as Peacotums or Colorcots; and even some crosses so complex that no common name for them exists.

But the family’s greatest success has been the Independence almond, which does not require pollination by bees, and is now grown on nearly 50,000 acres in California, mostly in the Central Valley.

In addition to his daughter, Zaiger is survived by his two sons, Gary and Grant, who also work in the family busi-



ness, Zaiger's Inc. Genetics; six grandchildren and 16 great-grandchildren. His wife and siblings predeceased him.

His fruit varieties live on at farms and markets around the world.

You could argue that his legacy lives on through both his fruit varieties and his family.

As mentioned, all three of Floyd's children, Leith, Gary and Grant worked with their dad, and now grandchildren, like Tracee, are carrying on the tradition.

Part of the Zaiger's logic to fruit breeding is, "we dont tell growers what to plant, we try new things, we develop something and have growers and buyers come try it," shared Leith.

Tracee explained that every

Wednesday, May thru September, they host fruit tasting and evaluating. Standing under the canopy of the orchard, salesmen, buyers and growers get to try the latest varieties. This includes their industry partner, Dave Wilson Nursery, who's sale agents are licensed by Zaiger to sell their varieties across the world.

"We have to keep a little bit of everything in our program, so we can get farmers and their buyers the flavors and Brixs they are looking for," said Leith.

What is a Brix, you may be wondering? The term Brix is used as a measure of maturity, flavor, and level of sweetness in fruits and vegetables to help in fixing the time of harvest, sales, and processing.

I asked Tracee and Leith, "what would Floyd be most proud of today?"

Without hesitation, Leith said, "his family, and probably the success of the Pluot." Tracee added, "he was never afraid to try new things, he even tried a fuzzy cherry to help prevent cracking."

And, just like Floyd, the next generations continue to try new things.

As Leith explained, "the game is changing." Mentioning hurdles like SGMA, less rainfall and fewer chilling hours, the team is working on varieties that are more drought resistant and can survive extreme heat. "We have to create farmer friendly varieties, different parts of the world want different flavors."

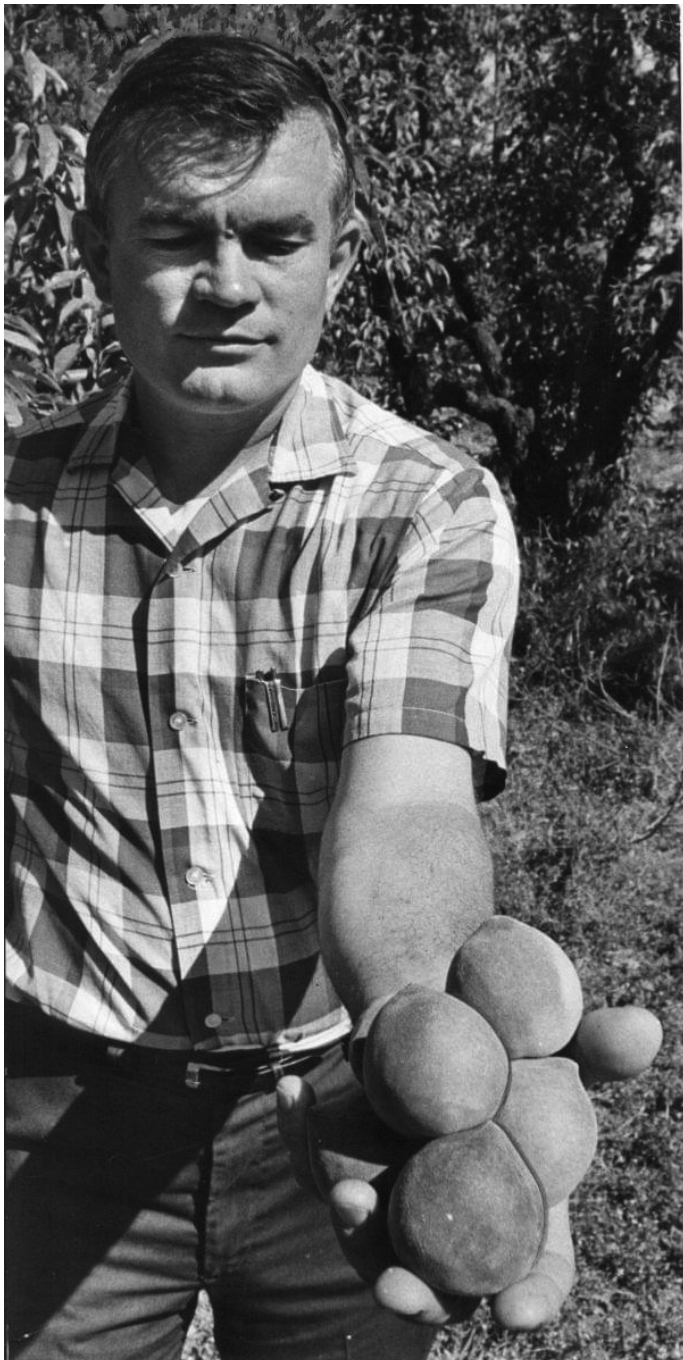
"My dad always said, you can't be a plant breeder and sit in an office," smiled Leith.

As this article goes to print, Leith and Tracee are ramping

up for pollination time. The team at Zaiger, which includes mostly tenured employees, hand-pollinate using an eyeshadow brush, yes you read that correctly, an eyeshadow brush. Both ladies shared that they enjoy the hustle of pollination season and so do some of the employees. In fact, Tracee shared that they have some former employees, who have retired, that come back to work each year during pollination.

For almost 70 years, the Zaiger Family has patented nearly 500 varieties, developed relations throughout the world and worked hard to enhance the fruit and nut varieties. Leith agrees, "we work hard, but not as hard as my dad did."

Cheers to the Zaiger family as we celebrate their legacy in our Nursery Special.



Photos provided by Dave Wilson Nursery, 'Remembering Floyd Zaiger'

From Storms on page 8

to comply with the law. Frank Hilliker of San Diego said he is producing about half of his normal eggs because some barns aren't yet compliant.

U.S. agriculture secretary: Prosperity remains elusive for too many farmers

U.S. Agriculture Secretary Tom Vilsack says record U.S. agricultural production isn't translating to increased earnings for the average family farm or ranch. In an address to the American Farm Bureau Federation convention in Puerto Rico, Vilsack noted that 50% or more of American farm families had negative income, even as U.S. agriculture recorded overall record profits over the past two years. "We need to create more opportunities, more revenue streams, more markets, more help," Vilsack told the AFBF gathering.

Farmers share expertise on planting cover crops in new database

California orchard and vineyard growers have partnered with University of California agricultural researchers to create a searchable database to share information on planting cover crops. The database includes a compilation of experiences of farmers who planted cover crops in hopes of reaping benefits for soil health and water retention. The project is being undertaken by the UC Sustainable Agriculture Research and Education Program, UC Cooperative Extension, the Napa Resource Conservation District and the Community Alliance with Family Farmers.



Stanislaus Farm Supply, Co.
624 E Service Rd.
Modesto, CA 95358
(209) 538-7070
www.FarmSupply.com

January 2023

Dear Valued Members,

Stanislaus Farm Supply is seeking potential nominees to run in the upcoming election(s) for the cooperative's Board of Directors. Currently, there are three (3) director's seats up for election in District #1 and one (1) director seat up for election in District #2. Directors are compensated.

District #1 – 2023 Director Election Expiring (3 Year, Regular Term)

- 1) Dave Wheeler - (Incumbent seeking re-election)
- 2) Greg Nunes - (Incumbent seeking re-election)
- 3) **OPEN SEAT** - Seeking Nominees

District #2 - 2023 Director Election (1 Year, Special Term)

- 1) **OPEN SEAT** – Seeking Nominees

District #1 – Principal residence residing in California Counties; San Joaquin, Stanislaus, Merced, Tuolumne, Calaveras, Mariposa, Contra Costa, Alameda, Santa Clara, San Benito.

District #2 - Principal residence residing outside the physical boundaries of the California Counties listed under District #1.

If you are interested or know someone who may be interested, please contact the Nominating Committee Chair, John Barindelli at (209) 595-7395 or jbarindelli@gmail.com by the date below.

NOMINATION DEADLINE: JANUARY 31, 2023

TIME REQUIREMENTS: Board Meetings are held bi-monthly (every other month) with special meetings as agreed upon by the Board. The duration of meetings are typically four hours, but may vary. Board meetings may be held in Stanislaus County, Fresno County or virtually.

In recent years, the need for a farmer-owned supply company has shown itself to be invaluable both in maintaining a reliable supply of products and in allowing farmers to financially participate in a successful crop input supply company. Lastly, participation as a director provides valuable insights into the world of agrochemicals, global trade, supply chain and crop input commodities. If this interests you, we look forward to receiving your information.

Respectfully,

Nickolas J. Biscay
President & Chief Executive Officer



Mahindra



MASSEY FERGUSON



ROXOR



WMA Weiss McNeil
NUT HARVESTING EQUIPMENT



PARTS | SERVICE | SALES | LEASING | RENTALS | USED EQUIPMENT | NEW EQUIPMENT

ALSO HANDLES

- AGCO HESSTON HAY EQUIPMENT
- SCHMEISER TILLAGE/ORCHARD EQUIPMENT
- COMPACT TRACTOR RENTALS
- JAYLOR FEEDING EQUIPMENT
- PEERLESS DRYING EQUIPMENT
- PARTS & SERVICES ON MOST BRANDS OF EQUIPMENT
- DONALDSON FILTER



**California Women for Agriculture
Stanislaus Chapter
Invites you to Our
Table Setting Luncheon & Vendor Faire
It's our Annual Scholarship Fundraiser**

Event Date: Saturday, February 4, 2023

Opens at 9:30 AM (Lunch at 12:30 PM)

Location: Stanislaus County Fairgrounds

Sponsorships:

GOLD: \$500 for a Hosted table & 8 tickets

SILVER: \$250 for 4 tickets

BRONZE: \$150 for 2 tickets

Table Hostess : No Charge

(ONE Complimentary luncheon, per table setting)

Adult Luncheon: \$40

Child Luncheon: \$20 (10 & under)

For a 2023 Flyer please contact

Caroline at (209) 321-1917 crfam@fire2wire.com

Ellen at (209) 495-2151 ellen.durrer@gmail.com

Pre-Sale tickets Only



hughson nut
an ofi company

**Working Locally and Globally
to Bring You the Best Returns**

Proudly Growing, Processing, & Shipping
Inshell • Shelled • Manufactured

Your Local Grower Representative

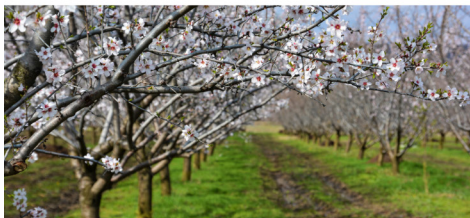


Donny Hicks
(209) 277-5875
Donny.Hicks@ofi.com



www.hughsonnut.com
www.olamgroup.com

**WESTERN
VALLEY
INSURANCE**
Lic#0649647



**Offices in
Turlock, Los Banos &
Crescent City
209.634.9031**

- **Agriculture**
- **Health**
- **Home**
- **Auto**
- **Commercial**

www.westernvalley.com

FUNDING AVAILABLE

For Soil Health Management in Orchards

**ONLY 10 SLOTS AVAILABLE
EACH SEASON**

What you'll get:

Cooperative buying power and technical assistance to implement conservation practices such as:

- Cover Crops
- Irrigation Water Management
- Nutrient Management
- Compost/Soil Amendments



Orchard Qualifications

- Must be located in San Joaquin, Stanislaus, Merced, Madera, Fresno, Kings, Tulare, or Kern counties
- Must be enrolled with FSA
- Preference points for orchards who would like to try these practices for the first time.

To apply please contact:

Andrea Brophy - East Stan RCD
andrea@eaststanrcd.org
(925) 408-2047
www.eaststanrcd.org/funding



PERSEVERING Farming Future

Source: CFBF by the Numbers

18% That's the American Farm Bureau Federation's estimate for how much production costs rose for farmers and ranchers in 2022.

Many farmers and ranchers may well have experienced worse increases, given the estimated 52% increase in fertilizer costs, largely blamed on the Russian invasion of Ukraine. Pesticide costs were up by 20%, fuel by as much as 42%.

In the third year of a devastating drought, 531,000 acres of normally productive farmland went unplanted at the start of the 2022 California growing season due to a lack of irrigation water, according to the U.S. Department of Agriculture. By October, more than 94% of California was listed in severe, extreme or exceptional drought conditions.

With California farmers facing costs rising as fast as their water supplies were diminishing, the California Farm Bureau worked on multiple fronts to protect our agricultural economy. Farm Bureau and other agricultural groups supported the inclusion of \$3.1 billion in the federal Inflation Reduction Act to provide assistance to 36,000 distressed agricultural borrowers across the U.S. who faced extreme financial difficulties from continuing pandemic impacts, supply-chain backlogs, droughts, wildfires and rising farming costs.

Our federal policy and legal teams worked to help secure \$4 billion in federal funding to address drought impacts in the West by supporting water management and conservation efforts for the Colorado River and providing financial relief for farmers following crops and investing in water conservation measures over the next 3 years.

Our Government Affairs Division helped bring in \$510 million in 2022 funding from the California Department of Water Resources for water system improvements to help communities, water agencies, farmers and ranchers amid the continuing drought. That funding includes \$200 million to help groundwater agencies and communities that rely on aquifer supplies comply with the state's Sustainable Groundwater Management Act.

Additionally, we helped secure \$900 million over three years for wildfire prevention. Some \$582 million of that money will pay for removing hazardous fuels and promoting healthy forests, and another \$336 million will support community fire protection and economic growth in the forest sector. That's on top of \$200 million for the state's Greenhouse Gas Reduction

Fund, which helps farmers and ranchers reducing emissions by replacing harvesting equipment, tractors, heavy-duty trucks and agricultural pump engines.

In a year when even small steps were critical, California Farm Bureau Young Farmers & Ranchers donated 1,338 pounds of food to community food banks, raised \$7,500 and provided 429 volunteer hours for the American Farm Bureau Federation's Harvest for All program.

In the third year of the COVID-19 pandemic, Farm Bureau and Farm Employers Labor Service worked to help California agricultural employers to navigate safety regulations that continued to evolve and to cope with new challenges as

See Numbers page 31



Helping our Members Prosper



LOCAL AGRICULTURE FINANCING

MODESTO
TURLOCK
PATTERSON

MERCED
LOS BANOS
OAKDALE

yosemitefarmcredit.com   

We wish you and your family a happy and healthy new year.



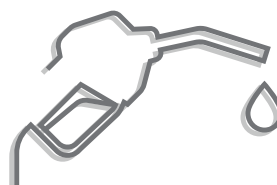
MIKE HEINRICH

209.312.4011 | MHeinrich@boyett.net

Inventory Management Competitive Pricing

**On Time Delivery
Gas, Diesel, Renewable Diesel, and
Red Diesel Available**

**Agricultural Commercial Fuel
Truck & Trailer Delivery
Bobtail Loads Available**



Boyett Petroleum
209.577.6000 | Boyett.net
601 McHenry Ave, Modesto, 95350

Did you know?
Nursery Fruit, Nut Trees & Vines is the
#5 Agricultural Commodity in Stanislaus County!


Source 2021 Stanislaus County Crop Report

Nursery Products

Category	Year	Field Acres	Quantity Sold	Total Value
Nursery Fruit & Nut Trees and Vines	2021	780	27,669,935	\$145,577,000
	2020	670	20,806,000	\$163,123,000
Nursery Ornamental Trees & Shrubs	2021	438	2,770,099	\$39,678,000
	2020	510	1,935,000	\$28,519,000
Miscellaneous Nursery Products ¹	2021	286		\$22,525,000
	2020	299		\$19,104,000
Total Nursery Products	2021	1,504		\$207,781,000
	2020	1,479		\$210,746,000

¹ Miscellaneous includes: Cut Flowers, Strawberry Transplants, Turf, Vegetable Transplants

SERVING OUR AG COMMUNITY



MID keeps water working for you

- Dependable water supply
- Irrigation system improvements
- Promoting efficient water usage
- Sustainable use of the Tuolumne River

MID Modesto Irrigation District *The Power to Grow*

www.mid.org

WATERFORD IRRIGATION
 IRRIGATION SUPPLY & DESIGN LIC# 1004196
 12500 Bentley St • Waterford, CA 95386 • 209-874-1386

Quality Irrigation Design, Sales & Installation - with the brands you Trust.

NETAFIM™
irritec
BOWSMITH®
FRESNO
 Valves & Castings, Inc.

Also now in Atwater:
 7016 Atwater Jordan Road
 Atwater, CA 95301
 209-358-1685



THEN



NOW

INNOVATION THROUGH THE YEARS

TURLOCK IRRIGATION DISTRICT
135 YEARS

Big Shoes to Fill at Stanislaus Farm Supply

By Wayne Zipser

With a new year upon us, there is change. There is nothing we can do about it. Time has a way of ticking away and it's always inevitable.

I have had the pleasure of knowing and working with a man that made huge contributions to our local agriculture community. Tony Weatherred started as a Customer Service Representative at Stanislaus Farm Supply on Service Road 45 years ago and recently retired. Tony and I are the same age. He graduated from Patterson High School in 1972 and I graduated the same year from Ceres High.

I got to know Tony when I would go into the store back in the 1970's and order materials that my dad needed for the

family farm. Tony was hired by Don McBride, the general manager back in those days. He started behind the counter with Sam Bettencourt, who later became the General Manager of the company not too long after.

Tony rose through the company and became a manager in the early 1990's. Tony and Sam both had the same vision for the company, to make Farm Supply the best when it came to customer service. The both of them also knew in order to ensure a great future for our local agriculture industry, they needed to reinvest in our 4-H and FFA programs. For the next 40 years it was very common to see Sam and Tony at the local Fairs at the Livestock Auction, buying animals from our youth. Their goal was to make sure these young students got a fair and reasonable price and the students had a good experience. I talk to people all the time who are agriculture teachers to crop

advisors and everyone in between, and they have told me the reason they went into agriculture was because of the wonderful experience they received with their 4-H and FFA projects and the opportunity that Farm Supply gave them.

In the early 90's Tony became Manager and the best years were yet to come. In 2004, I joined the Farm Supply Board as Board Secretary and since then I got to know Tony professionally and really got to see what he did for the company. There was no doubt over the years Tony became well known as one of the best procurement and inventory specialist throughout the country. It was then he was promoted to Marketing Manager.

Even in most recent years, during supply chain issues, Tony knew how to find the materials needed for the upcoming year and Farm Supply was always able to serve its members. Sam Bettencourt retired in 2015 and Nick Biscay became President and CEO of the company. He quickly realized how much

value Tony brought to the company and with expansions in Nevada and Kerman, Nick promoted Tony to Executive Vice President.

After WWII many cooperatives popped up in California mainly because back then agriculture had a supply issue. Today only a couple of Coop's remain and Stanislaus Farm Supply is the largest by far. I believe the success is no doubt due the incredible employees at Farm Supply, but I am sure Tony has a big mark on Farm Supply's success over the many years.


Tony always a quiet personality, but he was passionate about what he did. He was one of those guys 'when Tony talked, people listen.' I guess most of all, Tony has great integrity and always did the right thing.

I believe I can speak for Stanislaus Farm Bureau, that we all wish Tony continued success in his retirement and all the best for the years to come for him and his family.

Happy Trails Tony!

Tony Weatherred, left with President & CEO, Nick Biscay, right.





SAVE 25%

ON THE SALE OF YOUR PROPERTY

<p>Emily Hunter Broker/Owner DRE #01386542 925-785-3795 emhunterRE@gmail.com</p>	<p>Michael O. Bowers Broker Associate DRE #00901538 209.770.3683 or 510-919-4949 Michael@MichaelBowers.com</p>
--	--

Two Brokers serving you with an unparalleled level of service and a combined 56 years experience.






BLUEBIRD
REALTY
www.BlueBRealty.com



Residential • Farms • Ranches • Land

MID's BeAware BEAR



STOP, THINK, LOOK!

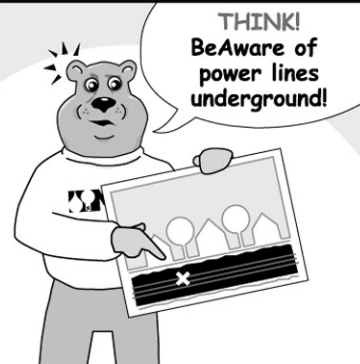
MID www.mid.org

MODESTO IRRIGATION DISTRICT



STOP! Before you start a project that requires digging, **BeAware!**

© 2007



THINK! BeAware of power lines underground!



LOOK! Can't you see them? **No!**



That's my point.

BE SAFE-
CALL BEFORE YOU DIG
1-800-642-2444

REMEMBER to STOP, THINK, LOOK!
BeAware - The Power is there!



ACCEPTING
orders



WALNUTS:

WOLFSKILL	CHANDLER
DURHAM	SOLANO
HOWARD	TULARE



CHERRIES:

CORAL	BING	BROOK
EPICK	CHERRY LINE 1 & 16	



PECANS:

WESTERN	WICHITA
WACO	BRADLEY

Call Us
TODAY
209.602.8394

www.orestimbannursery.com

WHOLESALE TIRES & WHEELS

Commercial/Passenger/4x4/SUV
Semi Truck / Farm & Dairy

Open 6 Days a Week—Monday-Saturday



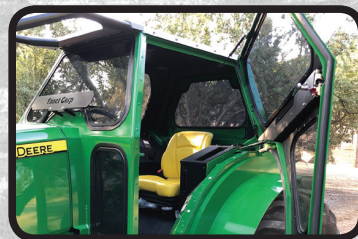
1030 W. Main St.
Turlock, CA 95380
Corner of W. Main St. & Davis

DHILLON
Tel (209) 668-1074
Cell (209) 277-3546

RAISING THE BAR

EcabTM
by Exact

NOW ROPS
CERTIFIED



- Fully Isolated Drop on Cab
- Quietest cab on the market
- Best in class serviceability
- Best visibility on the market
- New & improved A/C and Heating
- Integrated cowling for improved sealing and maintenance

Built by farmers for farmers... we understand!

To see our complete line of products, please visit
www.exactcorp.com or call us at 209.544.8600

Exact[®]
Harvesting Systems

TUOLUMNE COUNTY FARM NEWS

Farmers and ranchers recognized for conservation efforts

Story by Christine Souza
California Bountiful

To preserve the land under their care for future generations, many farmers and ranchers employ sustainable practices to maintain natural resources. The Leopold Conservation Award, established in memory of conservationist Aldo Leopold, recognizes agriculturists who inspire others with their dedication to land, water and wildlife habitat on private, working land. The 2022 award was presented to the Beretta Family Dairy of Sonoma County.

"I've tried to be ahead of the curve for a number of years," says Doug Beretta, who farms with his wife, Sharon, and adult children Ryan and Jennifer, with help from daughter Lisa and her son, Braydon. "The more conservation that I can do to make sure that this property stays in the family and stays as a farm, that's the biggest thing for me."

Sardella Ranch of Tuolumne County was also an award finalist.

The Leopold Conservation Award in California is made possible thanks to American Farmland Trust, Sustainable Conservation, California Farm Bureau, Sand County Foundation, The Harvey L. & Maud C. Sorensen Foundation, Farm Credit, The Nature Conservancy in California, McDonald's and California Leopold Conservation Award recipient alumni. Beretta Family Dairy Sonoma County

Striving for a lasting legacy Doug Beretta, who started milking cows on the dairy at a young age, leads the next generations at the Beretta Family

Dairy, while carrying on the legacy started by his grandfather.

Beretta Family Dairy is a 100% certified-organic dairy with 300 milk cows and 400 heifers. As a pasture-based dairy, the family manages 400 acres at the home ranch and 120 acres on which the family raises heifers. They lease an additional 150 acres of public land for grazing.

"Conserving is something we do every day. You just do your job and implement projects as they come up and think, this may be neat for the dairy," Jennifer Beretta says. "It is really neat to be recognized (with this award) and know that you did a good job."

The family's conservation efforts include an automatic scraper and separating system that allows them to compost dried manure solids. The compost is applied to pastureland to improve soil health and used in the barn for cow bedding. These practices help the dairy reduce its carbon footprint by sequestering carbon and reducing fuel emissions, while also cutting costs.

"My grandfather built the first manure ponds on this ranch in 1968, before the Clean Water Act, because he knew that by capturing manure, he had fertilizer to put back on the ground," Doug Beretta says. "It means a lot to me to be that kind of an innovator."

By using compost for animal bedding instead of river sand, the Beretta family has noticed an increase in cow comfort and cleanliness. "The cows love the bedding and our foot trimmer noticed a difference in our cows' feet," Jennifer Beretta says.

The Berettas have partnered with the city of Santa Rosa since the early 1980s on water

use and became one of the first producers to accept the city's recycled wastewater for irrigation. The Berettas also have 75 acres of vernal pools that provide habitat for the California tiger salamander, a federally endangered species, and three endangered flowers.

"Having that 75 acres as critical habitat for tiger salamander, our cows are still able to graze and that has allowed for the salamander to still thrive and the flowers to still grow," Jennifer Beretta says.

The Berettas have invited visitors to the family dairy to showcase their conservation work and educate people about agriculture.

"I enjoy getting up every day and being able to work outside, whether it's pouring down rain or 30 degrees. I love being with the cows, with the land and seeing what we've accomplished," says Jennifer Beretta, who is president of the Sonoma County Farm Bureau. "It's neat to watch the baby calves be born, get raised up into a milk cow and then see how they produce. It's neat to plant the fields and watch your crop grow. It's just fun to watch it all happen."

Sardella Ranch
Tuolumne County

"The animals come first" Mike and Julie Sardella, owners of Sardella Ranch in Tuolumne County, have taken steps to preserve the 523-acre ranch, keeping it as natural as possible for grazing livestock and as habitat for wildlife.

"Growing up with my dad, I was always taught to never over-feed the property

and to rotate the cows," Mike Sardella says. Their cattle leave the property for part of the year to allow the land to regenerate. Now retired, the couple oversees management of the property and tends to horses, chickens and dogs.

"The animals come first," Julie Sardella says. The chickens and the horses are fed and watered, she says, "and then we take our high-energy border collies for a half-mile walk—and then we get our coffee."

The Sardellas lease the ranch to a cattleman who shares the same conservational values. The rancher's cattle are seasonally grazed to prevent erosion and sustain natural regrowth of grasslands.

Wildlife habitat and water quality have benefited from the Sardellas' efforts to enhance the riparian habitat along Rough and Ready Creek, a tributary of the Tuolumne River that runs through the ranch. By using only a small portion of their water for stock watering, the Sardellas devote the remainder to naturally enhancing the riparian area between the creek and the working land.

LOG IT, GRAZE IT OR WATCH IT BURN

MERCHANDISE FOR SALE

BUY NOW! SEE PRICING AND DETAILS BELOW.

Contact us to purchase or
visit Hurst Ranch or Rawhide
Meats!

(209) 522-7278



Hats: \$20



Stickers: \$5



Shirts: \$20



“When you have these open spaces, you have a whole ecosystem,” Mike Sardella says.

“We have a lot of migratory geese and ducks, the deer come through every year, and then we have bears, bobcats, mountain lions and coyotes, so we try to keep it as natural as we can.” A partnership that the couple has with Cal Fire, Mike Sardella says, is a win-win because burning clears the land of invasive species and offers the agency a place to train firefighters with controlled burns. “It opens up the ground to more grass and the wildlife comes in and feeds off all that new growth,” he says.

To preserve the natural state of the ranch, the couple worked with California Rangeland Trust to be the county’s first

property to be placed in a conservation easement. The voluntary, legal agreement permanently limits uses of the land to conserve natural resources.

“As property disappears, the whole lifestyle is going to disappear with it, so it is best to see if we can keep that alive by doing our part,” Mike Sardella says.

The ranch also includes historic features dating from the 1880s, including a mining camp, chapel, remnants from a Chinese labor camp and Native American grinding rocks.

The Sardellas say they are grateful for the Leopold Conservation Award nomination.

“Being a finalist shows us we are on the right track,” Julie Sardella says. “We are listening to the land.”

AMERICAN WOOD FIBERS

JAMESTOWN LOCATION

Buyers of PINE & FIR LOGS

For more information, contact:

American Wood Fibers

12015 La Grange Rd

Jamestown, CA 95327

Mike Krol

(209)984-1150

TUOLUMNE COUNTY BUSINESS MEMBERS



THANK YOU TO OUR BUSINESS MEMBERS!

- **A L Gilbert Company**
 - Oakdale, (209) 847-1721
- **Armstrong Logging**
 - Twain Harte, (209) 586-1384
- **Aspen Meadow Pack Station**
 - Sonora, (209) 965-3402
- **Auto Motion**
 - Sonora, (209) 533-2886
- **Benton Roberson CPAs LLP**
 - Sonora, (209) 586-5236
- **Blue Mountain Minerals**
 - Columbia, (209) 533-0127
- **California Reforestation Inc**
 - Sonora, (209) 840-1326
- **Canepa & Sons Well Drilling**
 - Sonora, (209) 532-1136
- **Cedar Ridge Apple Ranch LLC**
 - Sonora, (209) 533-9463
- **Conifer Communications Inc**
 - Sonora, (209) 532-5859
- **Crook Logging Inc**
 - Groveland, (209) 902-7716
- **Diestel Turkey Ranch**
 - Sonora, (209) 532-4950
- **Doherty Tire of Sonora**
 - Standard, (209) 532-3484
- **Fulton Trucking Inc.**
 - Groveland, (209) 962-4350
- **General Plumbing Supply**
 - Sonora, (209) 532-5573
- **Hurst Ranch**
 - Jamestown, (209) 984-3016
- **Left Coast Land Clearing**
 - Sonora, (209) 536-9174
- **Lockhart Appraisal**
 - Soulsbyville
- **Nordvik Enterprises**
 - Copperopolis, (510) 299-2789
- **Sierra Motors**
 - Jamestown, (209) 984-5272
- **Sierra Resource Management Inc**
 - Sonora, (209) 984-1146
- **Sweet Water Farm & Ranch Co. LLC**
 - Columbia, (209) 588-3338
- **Taylor Masonary Inc.**
 - Sonora, (209) 928-3219
- **Tuolumne Utilities District**
 - Sonora, (209) 770-8902
- **Twain Harte Lumber & Hardware**
 - Twain Harte, (209) 586-3571
- **Valley Pacific Petroleum**
 - Stockton, (209) 948-9412
- **Yosemite Farm Credit**
 - Turlock, (209) 667-2366
- **Yosemite Title Co.**
 - Sonora, (209) 694-8326

CONTACT OUR OFFICE TO UPGRADE YOUR MEMBERSHIP TODAY!



(209) 522-7278

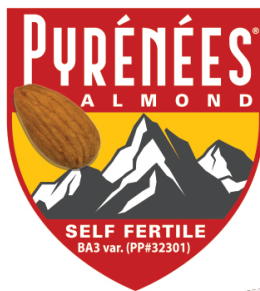


abid@stanfarmbureau.org

SELF-FERTILE



The leading breeder of the most sought after almonds by handlers statewide.



Let our Burchell team help you make the right decisions for the future of your business.

BURCHELL NURSERY

CALL NOW 800-828-TREE burchellnursery.com



ROBERT GRAY
209-602-2236



MANNY SOUSA
209-485-4552



GERRY HUNTER
530-776-7605



TIM GERDS
559-285-3114



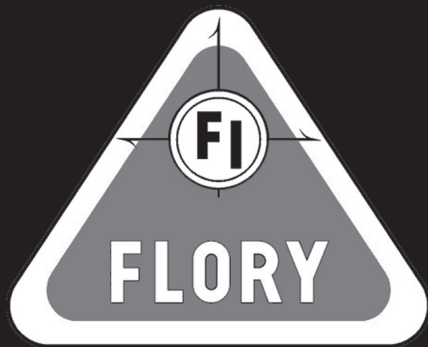
JEREMY BAHNE
559-430-5399



Thank you for your President's Club Membership!



Our premium level of membership comes with numerous additional benefits with a customizable package. Your support plays a vital role in Stanislaus County Farm Bureau's efforts in defining and addressing the issues facing the Agricultural Industry today. Stanislaus County Farm Bureau would like to thank our dynamic President's Club Members!



Leaders in Nut Harvesting Equipment

TRADITION

SERVICE

INTEGRITY

CRAFTSMANSHIP

Serving the agricultural community since 1936

4737 Toomes Road, Salida Ca. (209) 545-1167
See all our products at goflory.com



Edwards, Lien & Toso, Inc.

Agricultural Appraisal Services

Providing Full Service Agricultural Valuation Products

8408 N. Lander Avenue
Hilmar, CA 95324



Office: (209) 634-9484
Fax: (209) 634-0765

e-mail: info@eltappraisers.com
www.eltappraisers.com

RANDAL H. EDWARDS, ARA
JEFFREY A. LIEN
ANTHONY J. TOSO, ARA

RICHARD L. KILGORE, ARA
KYLE E. DALRYMPLE
KAY A. AUSTIN
TIFFANY L. HOLMES, ARA
JOHN E. DAVIS, ARA
ALYSSA L. HAINES

MARTIN SEANEZ, ARA
JOHN J. STROHMAIER
MARY ANNE DORES
STEPHANIE J. BENGARD
GEORGE L. MORASCI
JASON L. EDWARDS



Available Now

1-800-GRAFTED

duartenursery.com | Hughson, CA
sales@duartenursery.com

ALMOND

WINEGRAPES

PISTACHIO

WALNUT

Best Genetics
Rootstock & Scion

Top Performers in
RVT*

Bennett-Hickman

Yorizane The Gold
Nut™

Clean Plants for Your
Future™

UberVine™

MagnumVine™

MagnumVine™ LT

Industry Standard D110

New VigorClone®

Budded Pistachios

Higher Vigor

Salt Tolerant

Compatible

Field Budding Service

The New Best Way

Clonal Rootstocks

*Regional Variety Trials
Visit our website for more information

SUPPORT YOUR LOCAL NURSERIES THIS SPRING!



• Plant a Garden

Check out one of the local nurseries to get fruits and veggies to grow at home!



• Add Landscaping

Spring is a great time to spruce up your yard so head to a local nursery for a great selection.



• Get Information

Local nurseries have knowledgeable staff members who can help answer your questions.

CHECK OUT THE NURSERIES BELOW TO FIND ONE NEAR YOU!

- 13 Oaks Farm
- A Cut Above
- Agriculture Department, Modesto Junior College
- Alexandra's Home and Garden
- Ana Linares
- Blumen Flower Farm
- California Landscape Supply
- California Transplants, LLC
- Carl Hill dba Blossom Hill California Plants
- CP Landscape Supply Center
- Craven Transplant Company
- Dalila Perez-Deniz
- Dave Wilson Nursery
- Del Mar Seed Company
- Dry Creek Orchards, Inc
- Duarte Nursery, Incorporated
- Fat Lady Farms
- Flora Huang dba Flora Garden
- Fresh Ideas Flower
- Gaia's Cottage Nursery
- Generation Growers,
- Gonzalez Nursery
- Green Aura
- Green Tree Nursery
- Grover Landscape Services, Incorporated
- Grow Your Own Food Nursery
- Growing for the Valley
- Ha Cao Nursery
- Hollandia Nursery
- Jact, Incorporated dba Newman
- JG Nurseries LLC
- Jose A Lainez Henrriquez
- Kelley Flower Farm
- Knudsen Nursery,
- Linwood Nursery
- Manuel Castro
- May Day Nursery
- Morris Nursery, Incorporated
- Morris Wholesale Nursery
- Myron Strasser, Jr.
- Ochoa's Nice Plants
- Planasa, LLC
- Plant Patience
- Pro Tree Nursery, LLC
- Quality Rock dba McPhee Wholesale Nursery
- Ravinesh Narayan
- Roos Tree Nursery
- Root Basics
- Rooted in Paradise
- SiteOne Landscape Supply
- Stephen Bowman
- The Burchell Nursery
- The Greenery Nursery
- The Sweetest Stem (Miller Flowers)
- UC Master Gardener Program
- Vicente Rivera
- West Coast Turf
- Westurf
- Yancey Home Center
- Zaiger's Genetics

For the **good** of your **food**.





RICO, PFITZER, PIRES & ASSOCIATES
INSURANCE AGENCY, INC. Lic 0499798

"Proudly celebrating over 50 years of excellence in our industry"



Bobby Rosa
 (209) 856-8820
 brosa@rppins.com



Lucia Farao
 (209) 856-8846
 lfarao@rppins.com



Leroy Rocha
 (209) 856-8839
 lrocha@rppins.com



Jeff Wolf
 (209) 856-8821
 jwolf@rppins.com



Leslie Machado
 (209) 856-8814
 lmachado@rppins.com



Tammy Gray
 (209) 856-8885
 tgray@rppins.com



Rosie DeLaCruz
 (209) 856-8840
 rdelacruz@rppins.com

Call us today for a personalized Insurance Consultation!

(800) 399-7473 • (209) 854-2000 • www.rppins.com



24-Hour Service



I.J. Larsen
Pumps, Inc.

MODESTO
 (209) 529-2020

HILMAR
 (209) 634-7276

LIC. NO. 270660

Serving You
for 100 Years
(209) 529-2020



FARM BUREAU Stanislaus County
 Farm Bureau
 10% off Discount

HAS YOUR BANK LEFT YOU HIGH *AND* DRY?



When your bank merges, is acquired or moves, it can affect you in ways you may not appreciate. Don't like the idea of being caught in the middle of change you didn't ask for? Start this new year off with financial stability you can count on!

Bank of Stockton has been a stable and secure choice for more than 155 years. We offer all of the products and services customers expect from a bigger bank along with the advantages of a bank that is truly invested in you and your community.

BANK OF STOCKTON

ESTABLISHED 1867

WITHSTANDING THE TEST OF TIME

R ROOS TREE NURSERY
Ready to Grow

A trusted resource for superior quality nursery stock

"Whether it's a new planting or replacement trees, I place my name and company brand on every transaction."

Tim Roos
Owner, President

ALMOND ROOTSTOCKS

- Viking
- Nemaguard
- Hansen
- Lovell
- Rootpak

ALMOND SELF POLLINATING VARIETY

- Yorizane

WALNUT ROOTSTOCKS

- Paradox Hybrid
- Vx211
- Rx1
- Vlach

Ask about our self pollinating almond stock!

Contact Tim at (209) 847-2520
Tim@RoosTreeNursery.com | RoosTreeNursery.com

From AFBF on page 12

Fifteen other state Farm Bureau presidents were re-elected to two-year terms to represent their regions on the board.

Midwest Region
Rich Guebert, Illinois
Randy Kron, Indiana
Brent Johnson, Iowa
Dan Glessing, Minnesota

Northeast Region
David Fisher, New York

Joe Tisbert, Vermont
Southern Region
Tom McCall, Georgia
Jim Harper, Louisiana
Mike McCormick, Mississippi
Shawn Harding, North Carolina
Rodd Moesel, Oklahoma
Eric Mayberry, Tennessee

Russell Boening, Texas

Western Region
Stefanie Smallhouse, Arizona

Jamie Johansson, California

National Program Committees
Matt Fimon of Virginia was elected chair of the Young Farmers & Ranchers Committee, taking over the position in March at the end of the Young Farmers & Ranchers Conference for a one-year term. Heather Graham of Kentucky was elected vice chair and Joel Currier of Colorado was elected secretary. They will each serve one-year terms.

Isabella Chism of Indiana was re-elected chair of the Women's Leadership Committee and Lorenda Overman of North Carolina was re-elected vice chair, each for a two-year term. Lou Nave of Tennessee (Southern Region), Lisa Wherry of Pennsylvania (Northeast Region), Marieta Hauser of Kansas (Midwest Region) and Shawn Wood of Arizona (Western Region) were re-elected to two-year terms.

Daryn Westergard of Utah was elected chair of AFBF's Promotion & Education Committee; Alan Clark of Idaho was elected vice chair. Both will serve one-year terms beginning in March.

AFBF thanks the more than 60 speakers and nearly 5,000 registered attendees who helped make the 2023 Convention such a success. Registered attendees may view selected workshops and sessions on-demand on the convention virtual platform for the next 90 days.

Planning for the American Farm Bureau's 2024 Convention has already begun. Mark your calendar to meet us Jan. 19-24, 2024, in Salt Lake City, Utah.

SO, WHERE DOES YOUR BUSINESS GO FROM HERE?

CRYSTAL BALL A BIT CLOUDY...?

The team at **VERMEULEN & COMPANY** will help you find the answers. We begin with an objective evaluation of performance and prospects and then develop a structured plan to help you make smarter decisions.

Call or e-mail for more info today.

Vermeulen & Company
AN ACCOUNTANCY CORP.

1180 W. Main Street, Suite 2 • Ripon
209.599.5051 • www.VermeulenCPA.com



grimbleby coleman
certified public accountants, inc.

IC-DISC
Implementation

Like-kind
Exchanges

Succession
Planning

Entity
Selection

Cloud-based
Accounting



Regional Ag
Accounting Experts!

(209) 527-4220
gccpas.net

it's the people
behind the numbers

200 W. Roseburg Avenue
Modesto, CA

McAuley Ford
250 N. El Circulo Ave.
Patterson, CA. 95363
www.mcauleyford.com
alecmcauley11@gmail.com

ALEC MCAULEY
Sales Consultant
Direct: (209) 892-3341
Fax: (209) 892-3205
From Modesto: (209) 527-0550



From Numbers page 18

they arose. The FELS website provided hundreds of free resources to Farm Bureau members. FELS Newsletter subscribers and FELS customers received 11 issues, including the latest information on pandemic workplace safety rules. FELS provided 14 free webinars on protecting farm employees and on supplemental paid leave for workers who missed time due to the virus. FELS also provided guidance on new overtime requirements, rising minimum

wages and shortages of employees. It produced and sold to agricultural employers more than 15,000 laminated employment notification posters and books to help agricultural employers to post information required by law. And FELS labor management consultants made some 2,000 worksite visits, providing training on safety, workplace harassment prevention, good management practices and positive relationships between supervisors and employees.

During the year, Farm Bureau's communications team fielded more than 100 media inquiries on challenges facing agriculture, with Farm Bureau's legal and policy experts interviewed frequently on drought, water cutbacks and the resulting impacts on food production. And Farm Bureau members and agriculture supporters stood tall on critical issues.

tacts to legislators. Farm Bureau members responded to 18 FarmTeam Alerts on important California legislation or rule-making and went into action. On one matter alone, the Proposition 12 measure impacting pork producers, they provided over 4,000 comments, making their voices heard.

Your Membership Matters!

Farm Bureau's political affairs team and 33,605 FarmTeam members initiated 22,804 con-

<p>52% increase in fertilizer costs</p> <p>20% increase in pesticide costs</p> <p>42% increase in fuel costs</p>		<p>\$510 million in funding for water system improvement</p> <p>\$200 million in funding to help groundwater agencies</p> <p>\$200 million for the Greenhouse Gas Reduction Fund</p>
---	--	---

VALLEY PACIFIC

Delivered Fuels | Lubricants | CFN Cardlock

Patriot Premium Products

We Fuel California

Family Owned & Locally Managed Since 1947

(209)948-9412 | www.vpps.net

PBM Supply & MFG., INC.

Quality Agricultural Spray Equipment, Parts and Supplies
www.pbmsprayers.com www.pbmtanksupply.com

-Sprayers- -Tanks- -Liquid Delivery Trailers- -Parts & Accessories-

PBM Supply & Manufacturing is a local agricultural manufacturing company that specializes in the design and construction of sprayers, tank trailers, and chemical handling equipment. Give us a call to find a dealer near you.

HAV Self-Propelled Sprayers

Chemical Mixing Trailers

Walking Beam Sprayers

Injection Plates

UTV Sprayers

Parts, Accessories, Repair Kits & More

Fowler Store
 877-688-1334
 3732 S. Golden State Blvd.
 Fowler, CA 93625



YOUR LEGACY IS OUR LEGACY

inquire now! N^o 1-844-DWN-TREE

DWNTREES.COM |   @davewilson